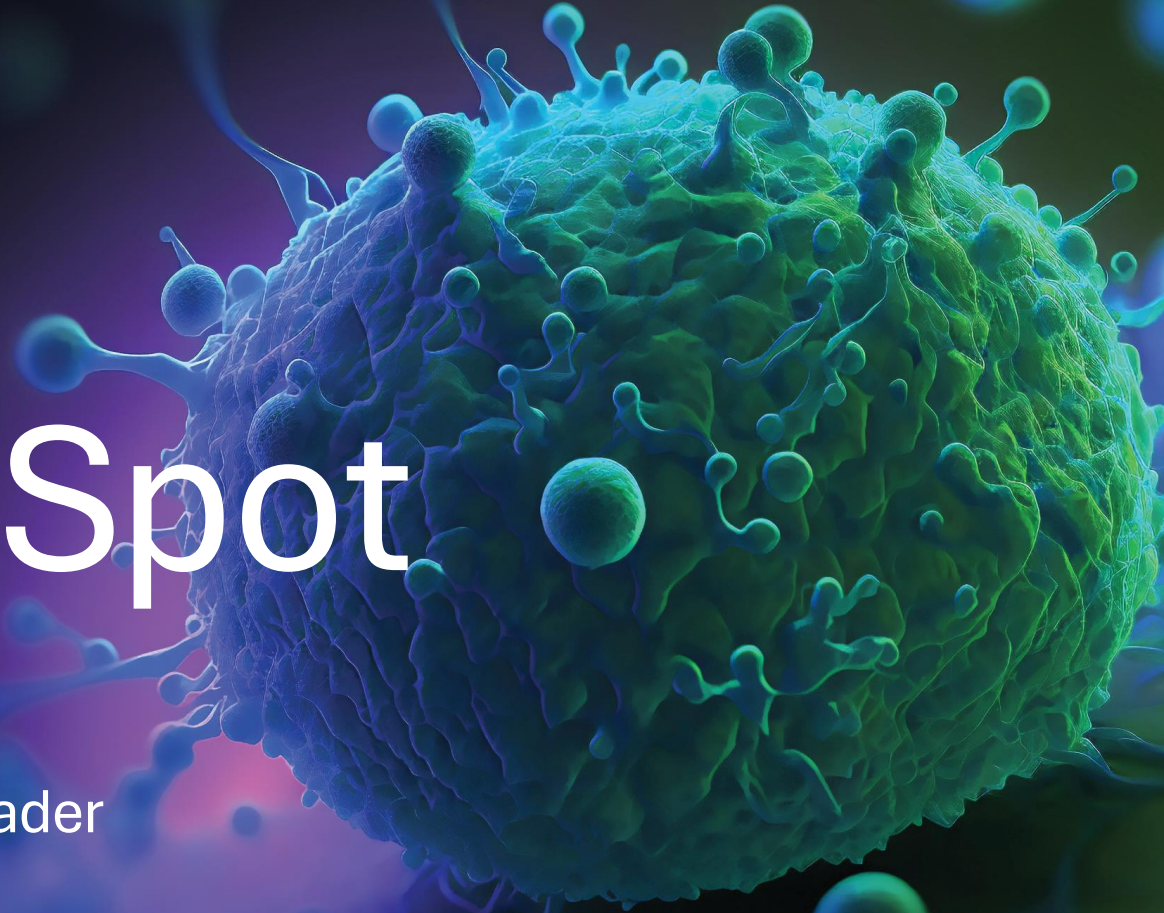


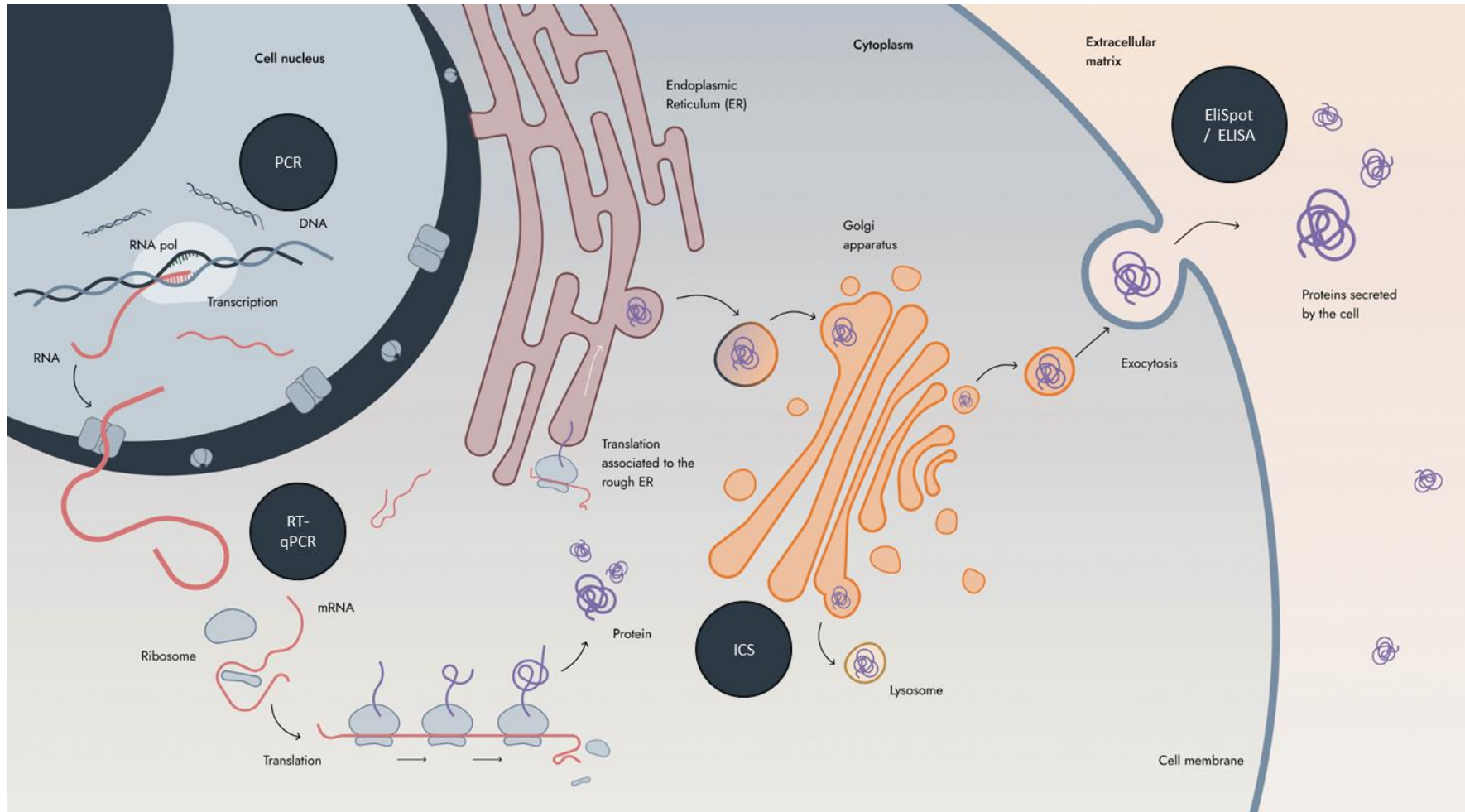


Autoimmun
Diagnostika

Insight EliSpot

AID - EliSpot, FluoroSpot and Reader
Systems at a glance





PCR

Identifying the molecular characteristics of the cell.

RT-qPCR

Quantification of DNA, mRNA, RNA ...

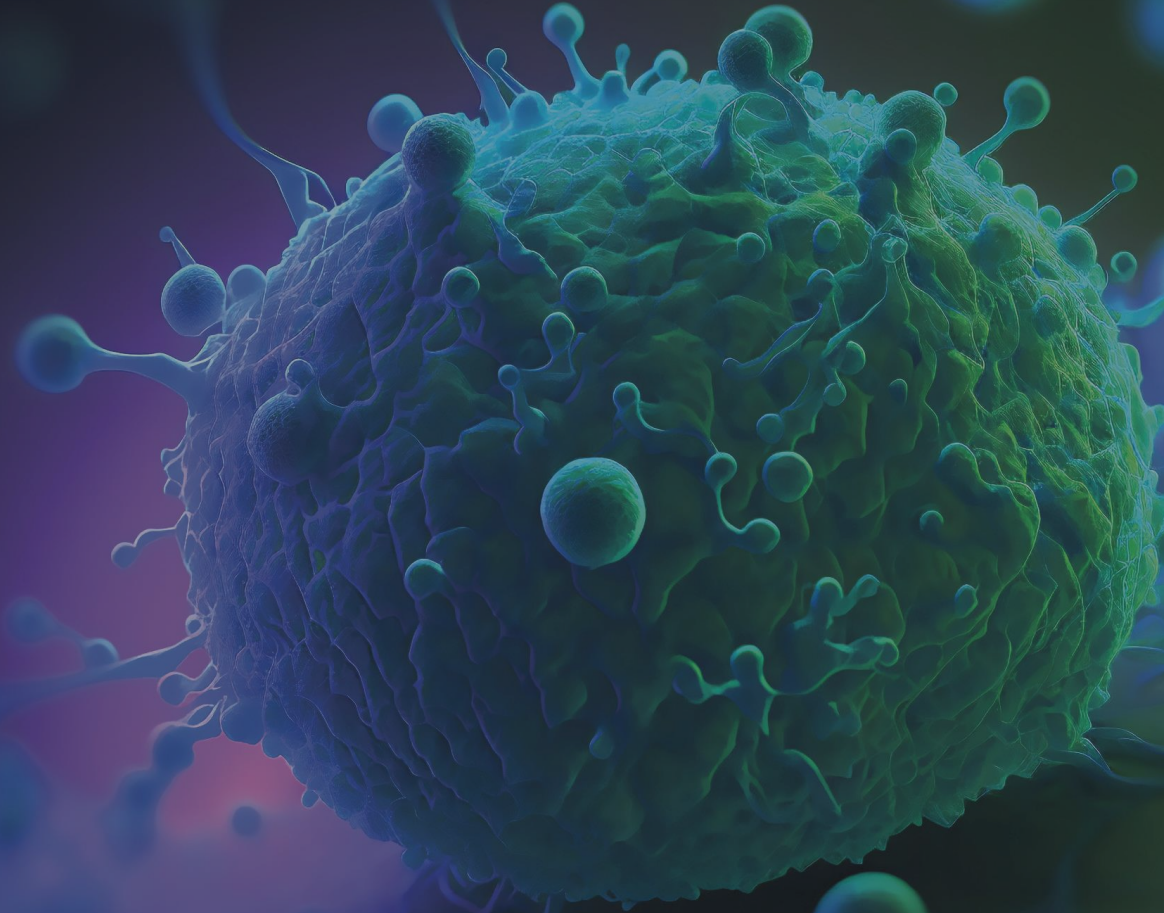
ICS

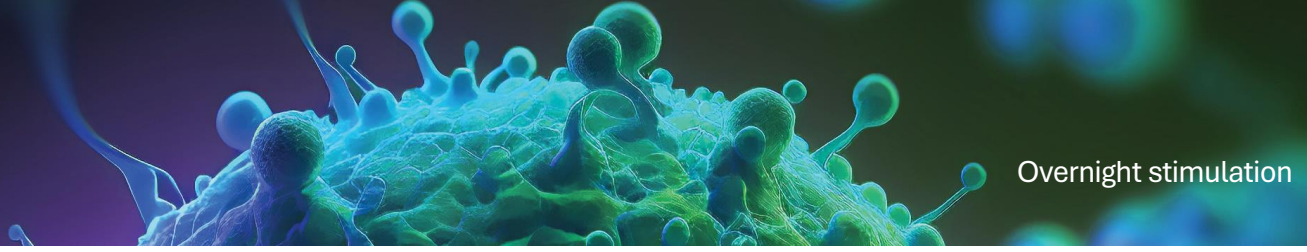
Frequency of cytokine producing cells.

EliSpot / ELISA

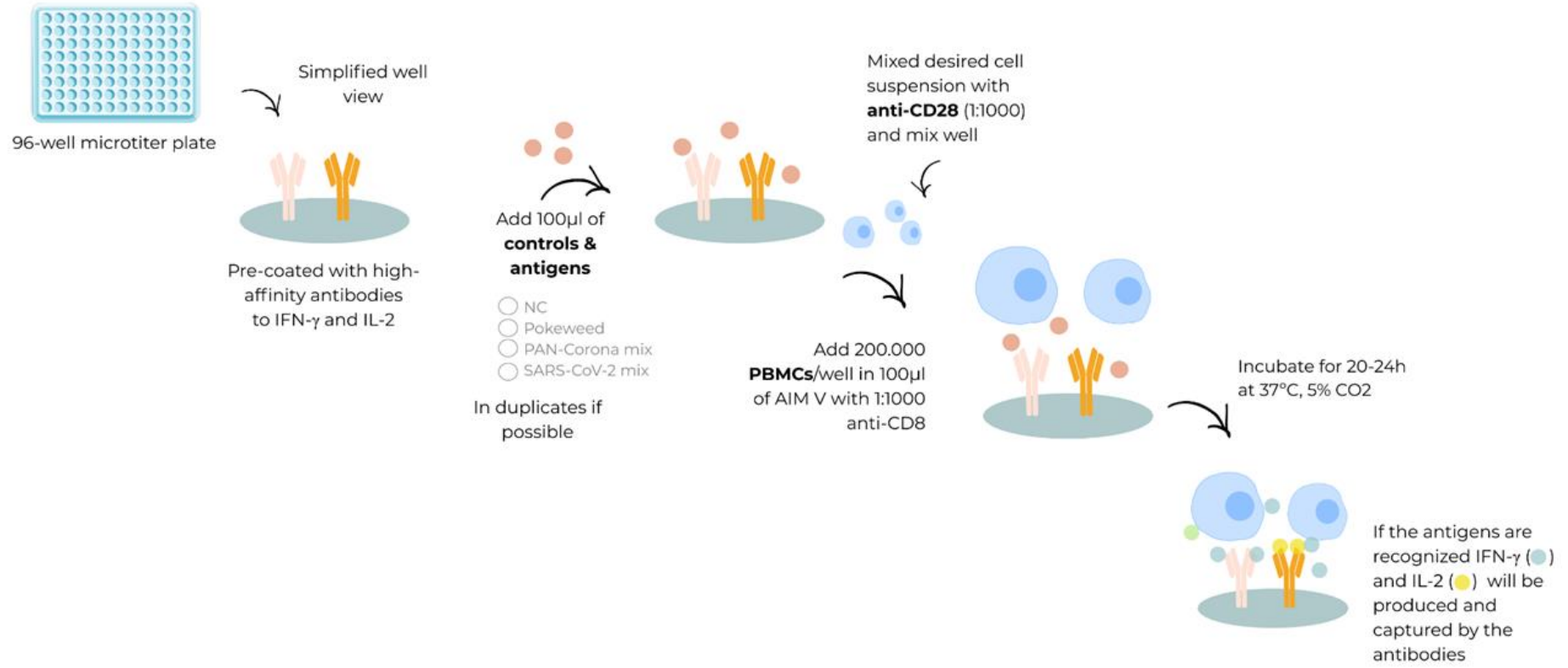
Determination of the functionality of B and T cells. With EliSpot on single cell level.

Brief overview of the procedure



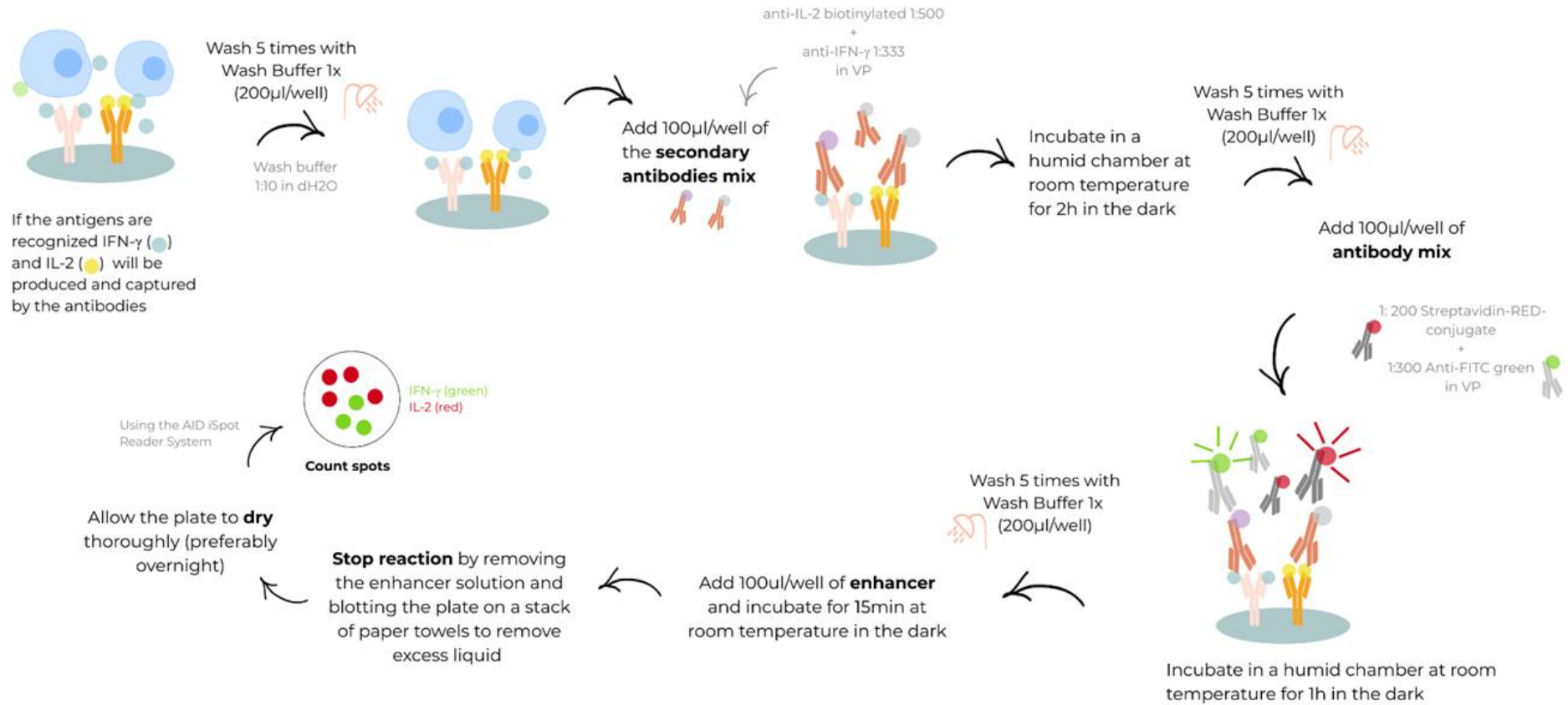


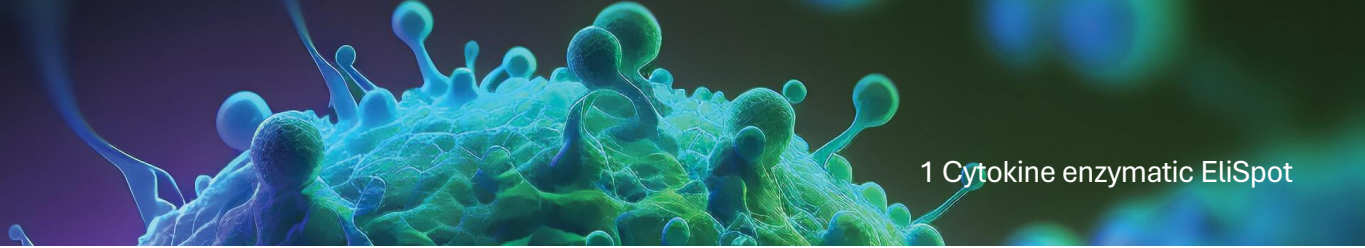
Day 1



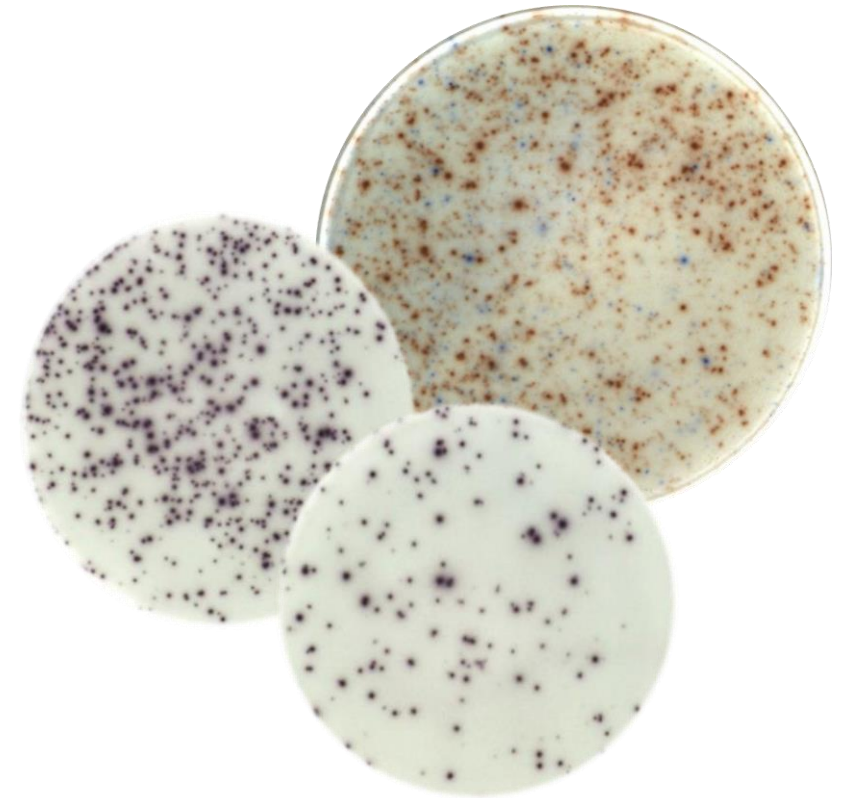
PBMCs: Peripheral Blood Mononuclear Cells

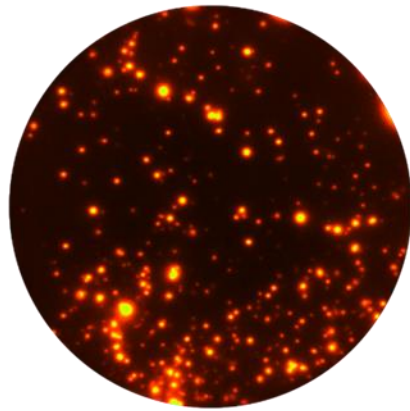
Day 2



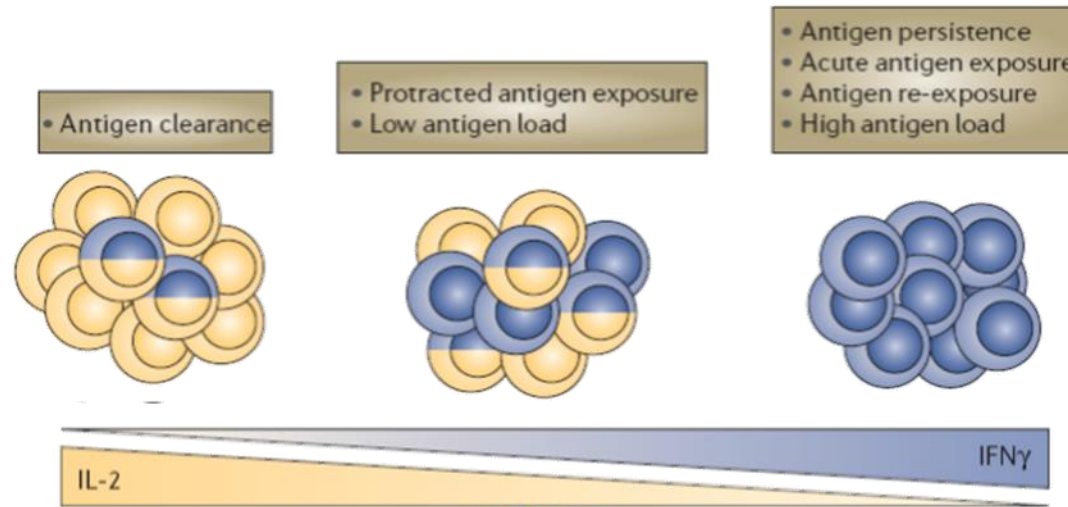


	Negative Control	Positive Control	Antigen 1	Antigen 2	
Donor 1					Reactive
Donor 2					Not reactive
Donor 3					Not valid
Donor 4					Not valid

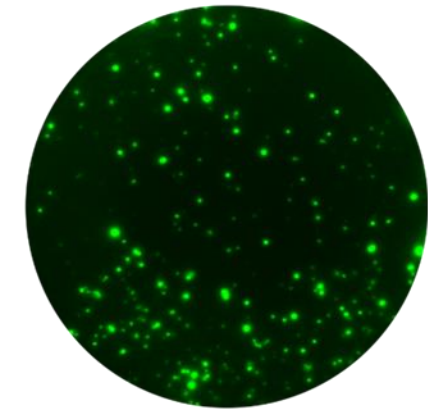




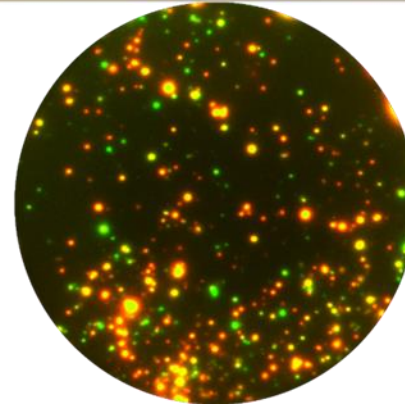
Memory T cells
Interleukin-2 EliSpot
Red fluorescence



Giuseppe Pantaleo and Alexandre Harari
NATURE REVIEWS | IMMUNOLOGY, vol 6 417-23, 2006



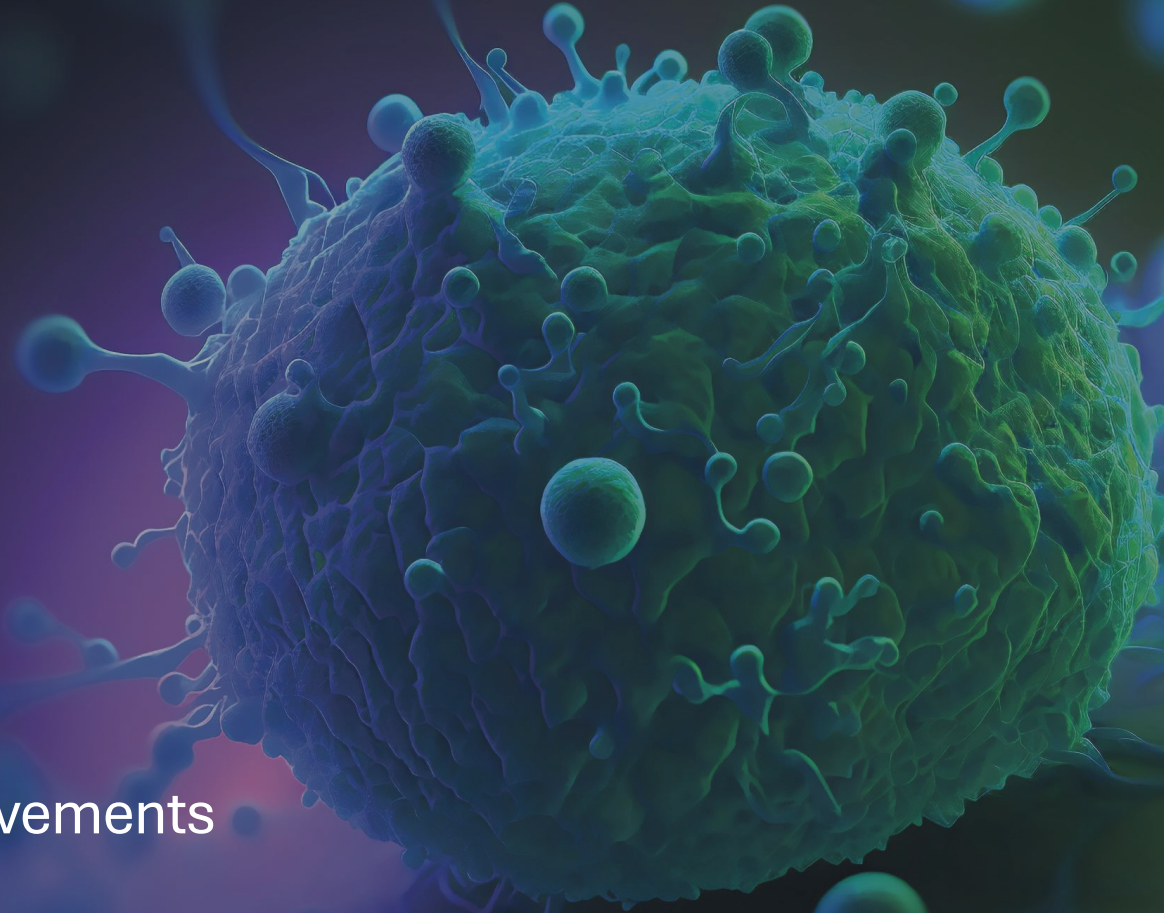
Activated T cells
Interferon- γ EliSpot
Green fluorescence

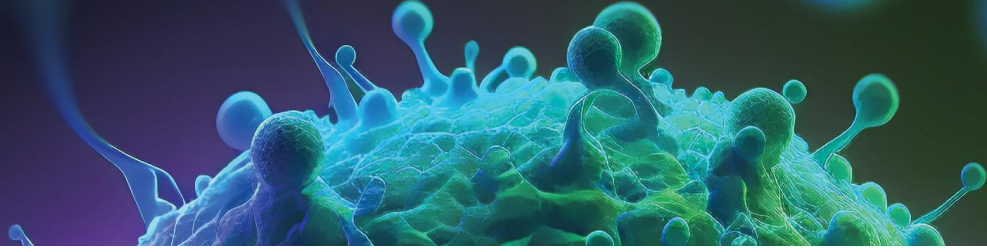


Double-stained
multifunctional T cells
Yellow

For more flexibility

New generation Hardware improvements





AID EISpot 8.1

Sys.Admin

240522 Plaques 96 TL

Compare wells

Channels: LED

Count Settings

240522 Plaques 96 black

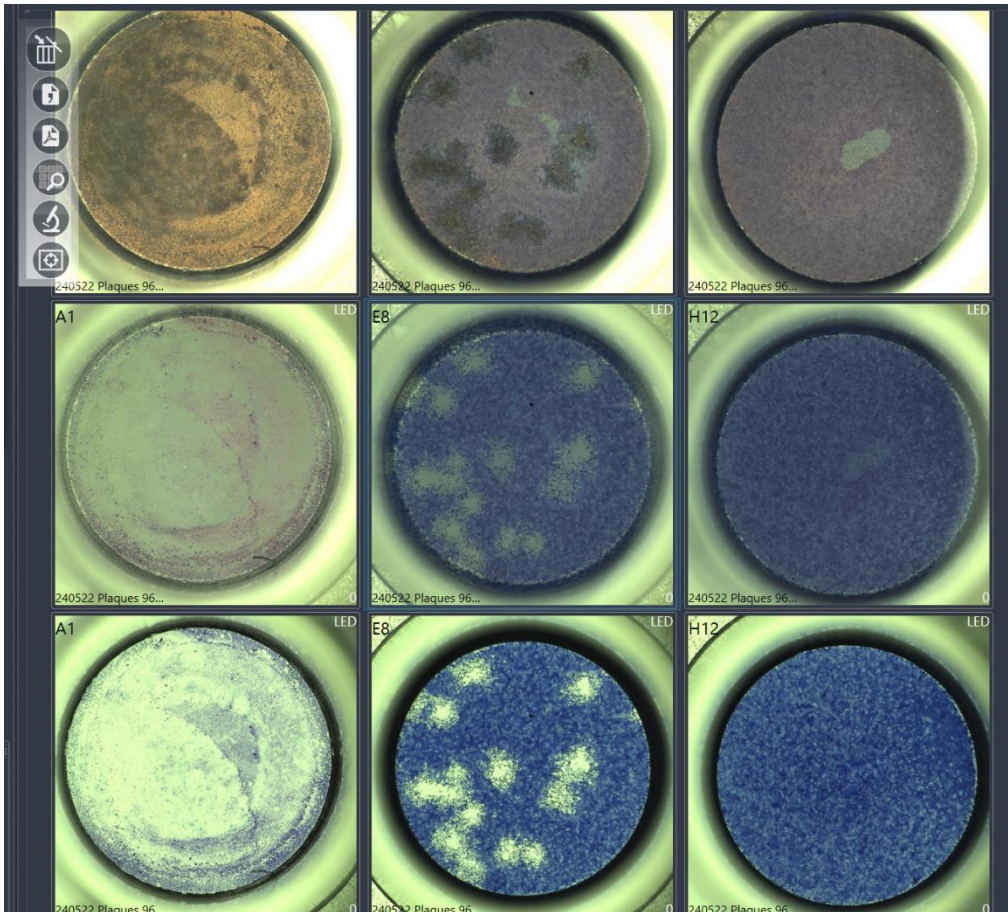
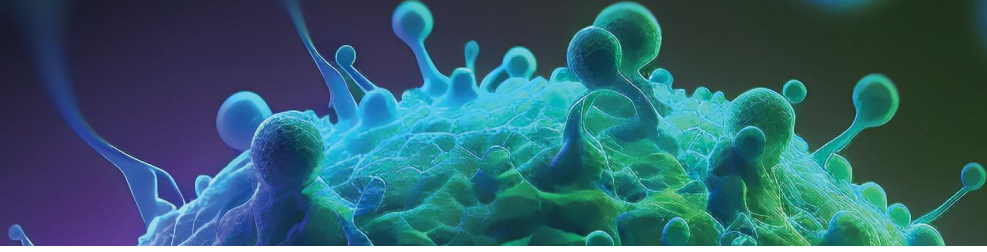
240522 Plaques 96 white

240522 Plaques 96 TL

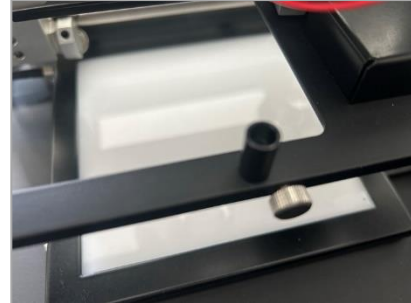
A1, E8, H12, LED

New, Load, Save, Stop, Count, Classification, Well view, Compare, Export

Compare different plates and read outs to show the difference

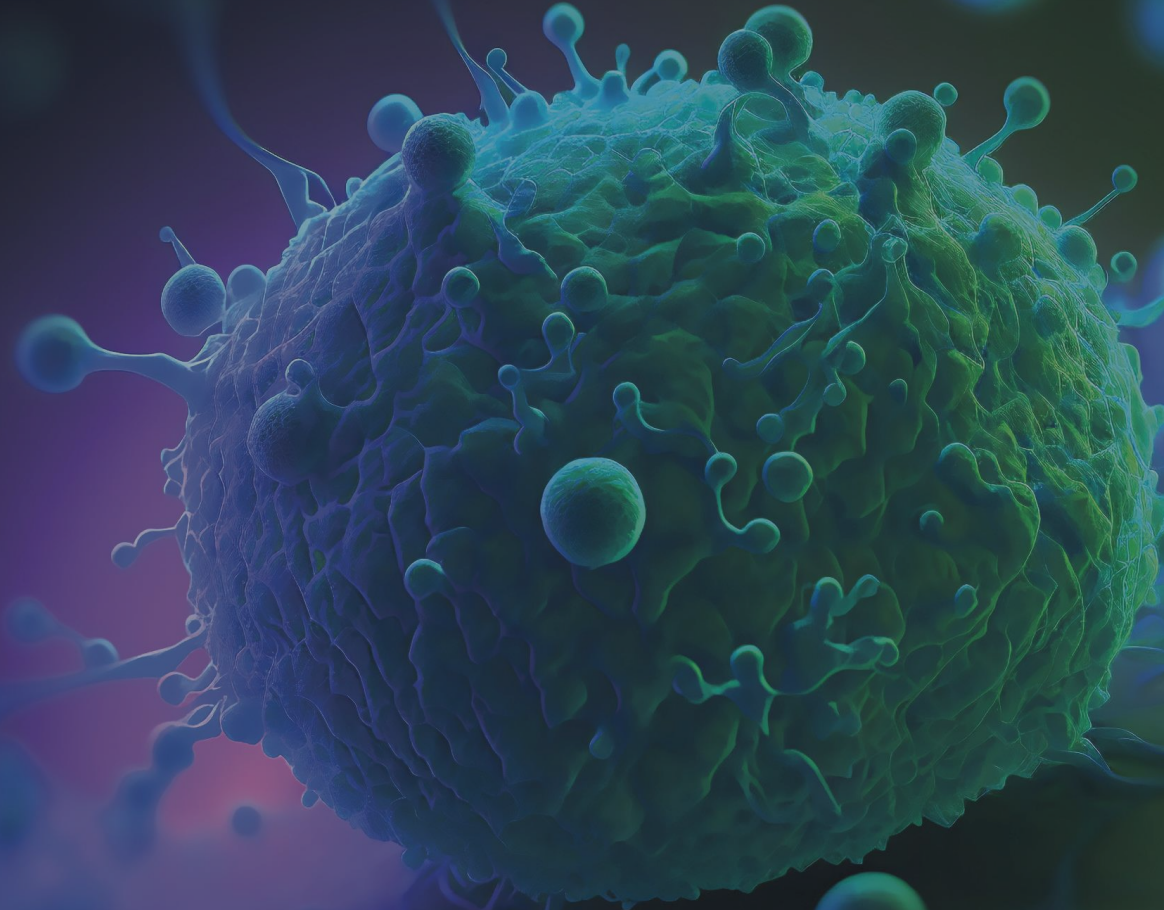


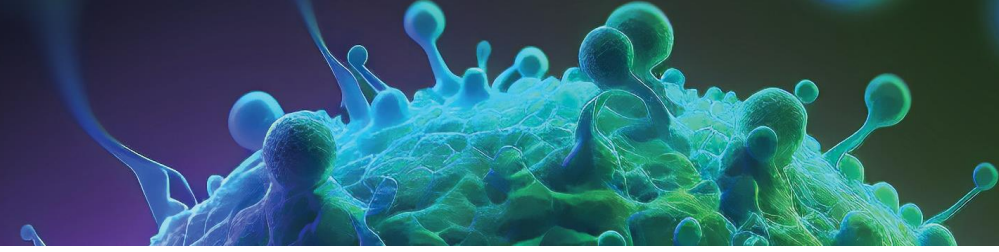
Light from above



Light from below

For more flexibility
New software features





Improved analysis of your enzymatic EliSpot

The screenshot displays the AID EliSpot 8.1 software interface. On the left, a 96-well plate grid is shown with numerical values in each well. The 'Compare wells' window on the right shows two circular microscope images labeled E1 and F1, with a red circle highlighting a specific spot in image E1. The control panel on the right includes buttons for 'New', 'Load', 'Save', 'Start', 'Stop', 'Eject', 'Count', 'Classification', 'Well view', 'Compare', 'Export', and 'Select HW profil'. The 'Compare' button is highlighted in blue.

	1	2	3	4	5	6	7	8	9	10	11	12
A	23	83	23	83	83	83	83	83				
B	73	83	23	83	43	83	83	83				
C	253	243	83	83	253	253	453	458				
D	353	353	453	83	253	323	453	453				
E	113	83	73	83	203	433	103	83				
F	114	83	27	83	203	433	190	83				
G	120	83	83	310	14	225	83	377				
H	213	83	83	303	73	240	43	315				

Channels: LED
Count Settings: IFNg, FITC

180608 Demo Dennis 2

Compare wells

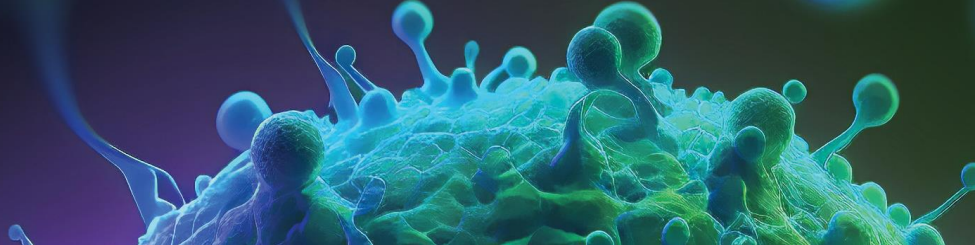
E1 LED F1 LED

180608 Demo... 114

Channels: LED
Count Settings: IFNg, FITC

180608 Demo Dennis 2

Compare wells (even from different plates) - Use the Microscope function for details



Classification

[File: ---]

New Class ■ **big**
Samples: 6

Delete Class ■ **small**
Samples: 8

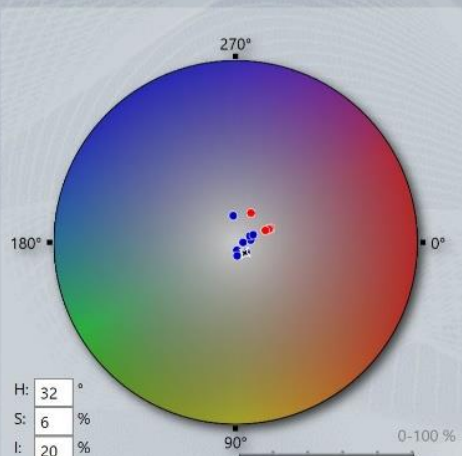
Delete all Samples

Class Criteria

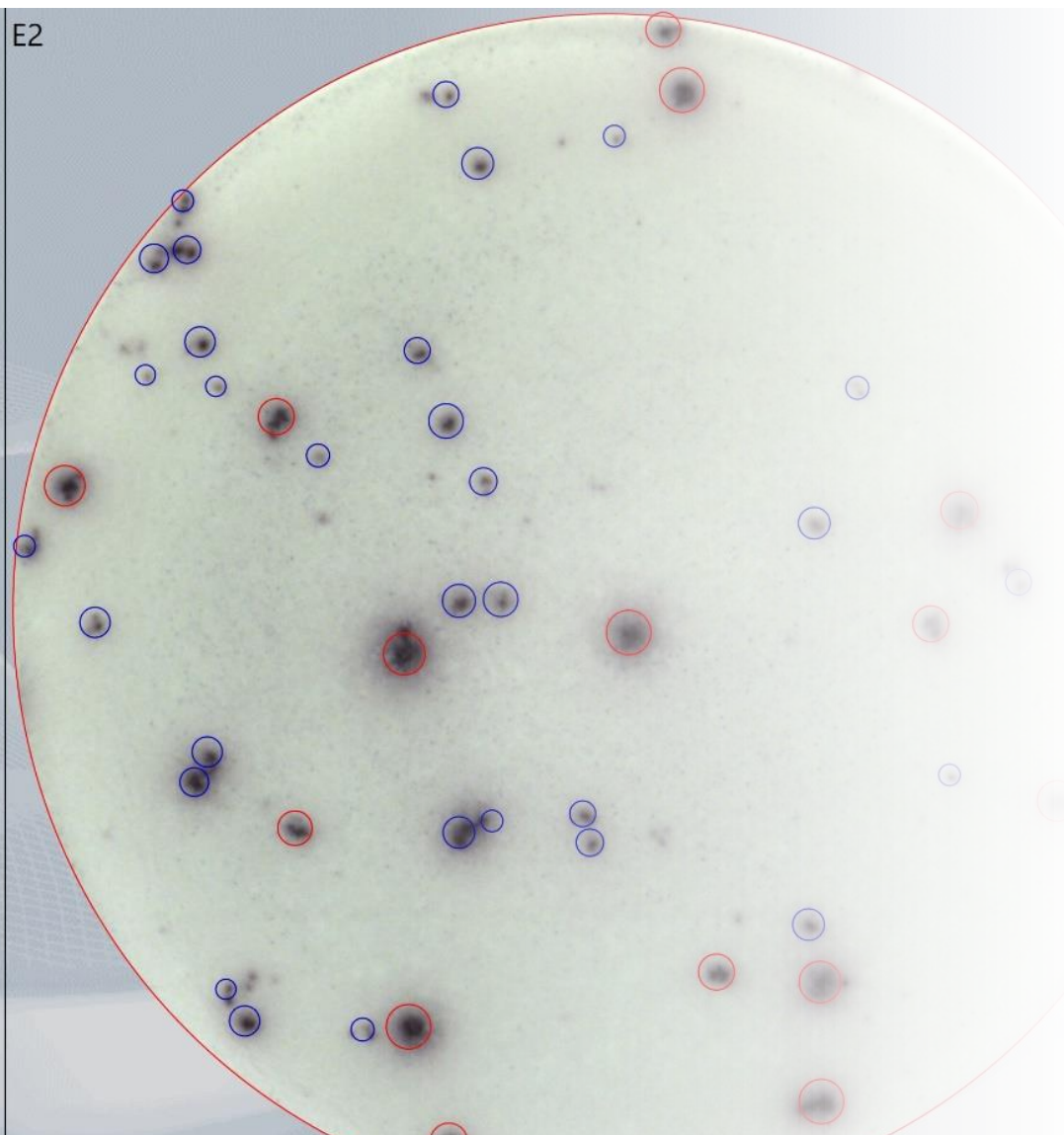
Training

Manual

Save Load



E2



Classify spots according to their:

Size Saturation

Hue Intensity

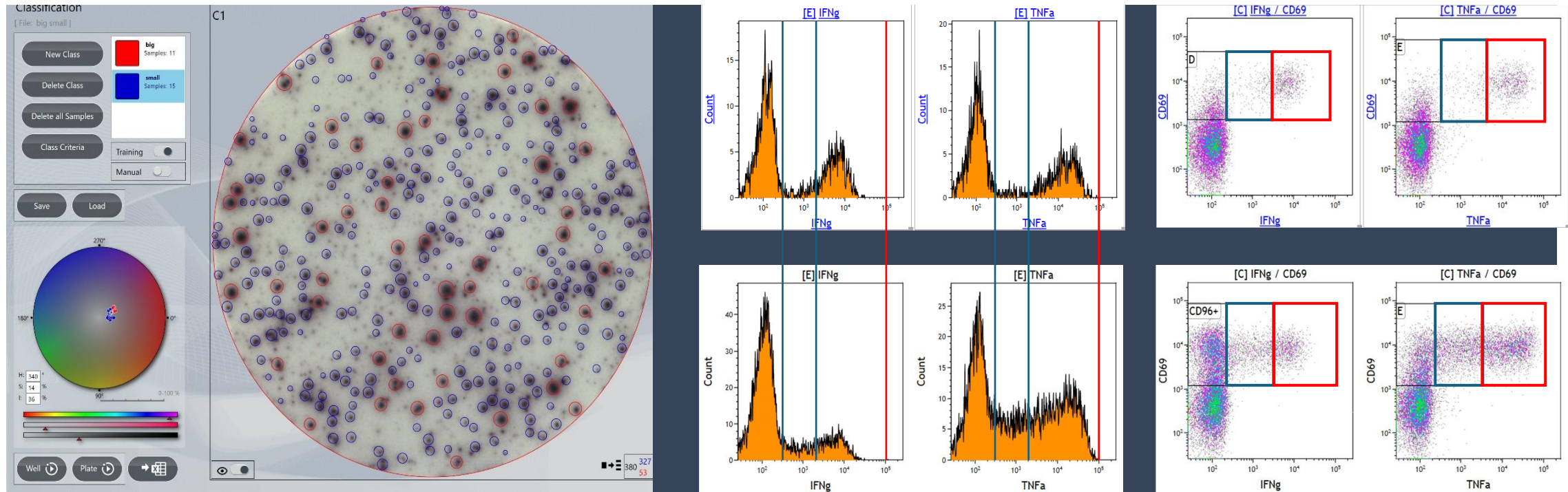
The emphasis of each parameter can be selected in a range of 0-100%.

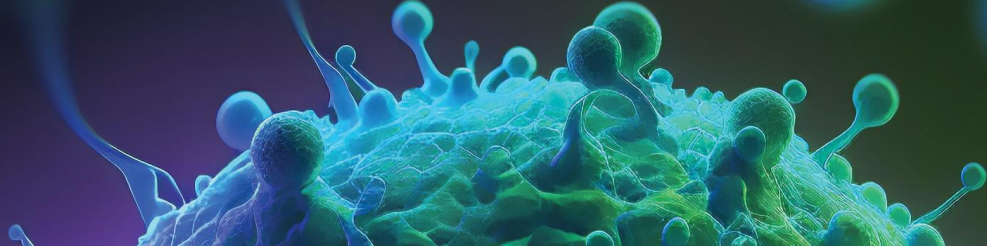
The Software can be trained to find your spots of interest.

Just set up a new group and teach the software which spots should be included.

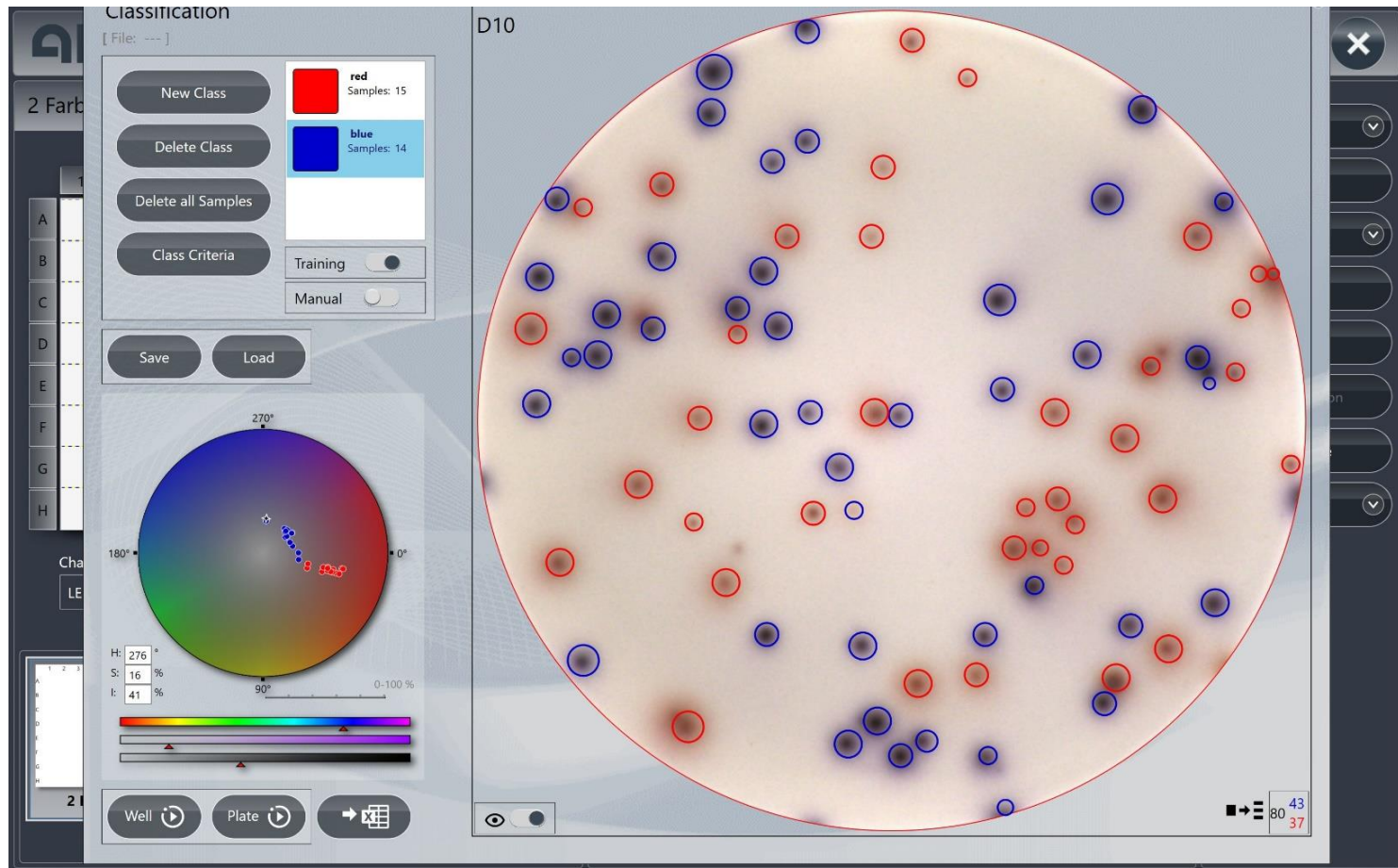
Catching up with flow cytometry

For all our customers who are used to ICS, the new Classification tool additionally allows to distinguish between big and small spots in the style of highs and dims.



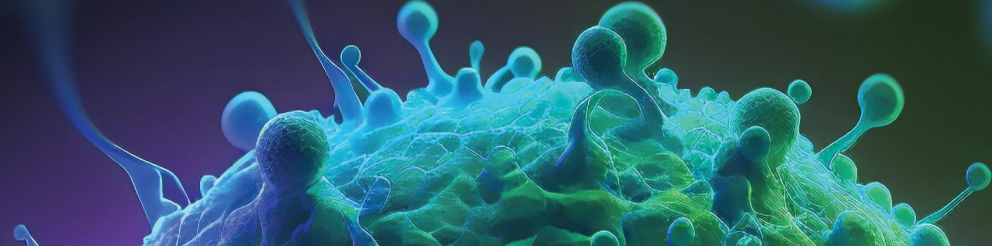


Classify spots according to their colour

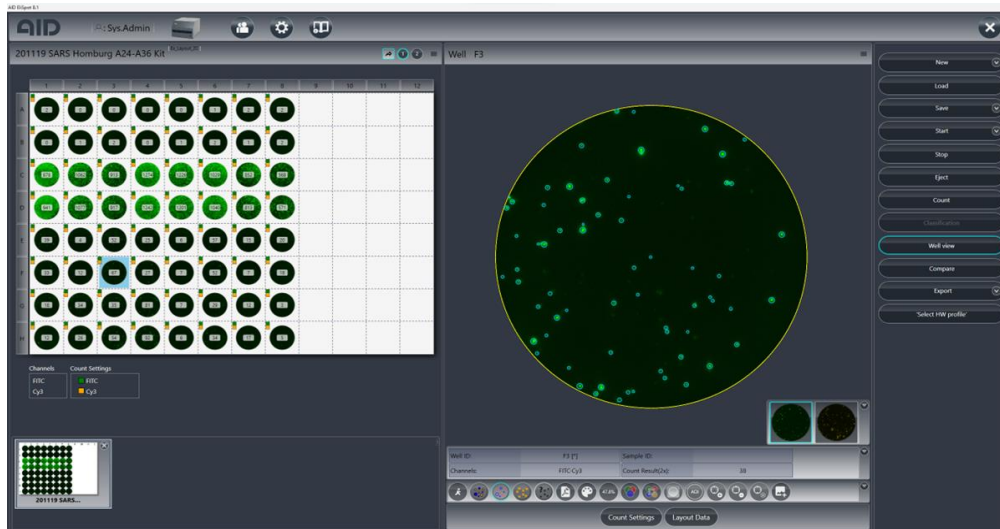


For multi cytokine analysis we generally recommend the use of fluorescent labels.

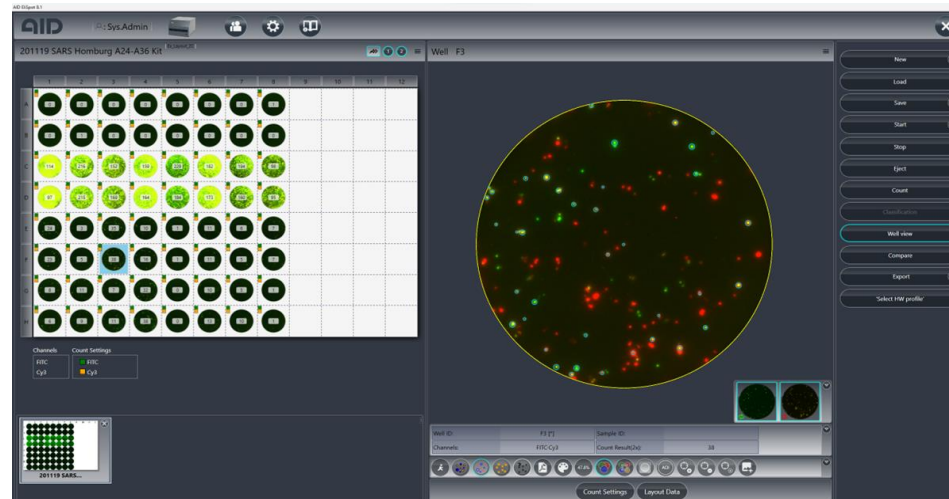
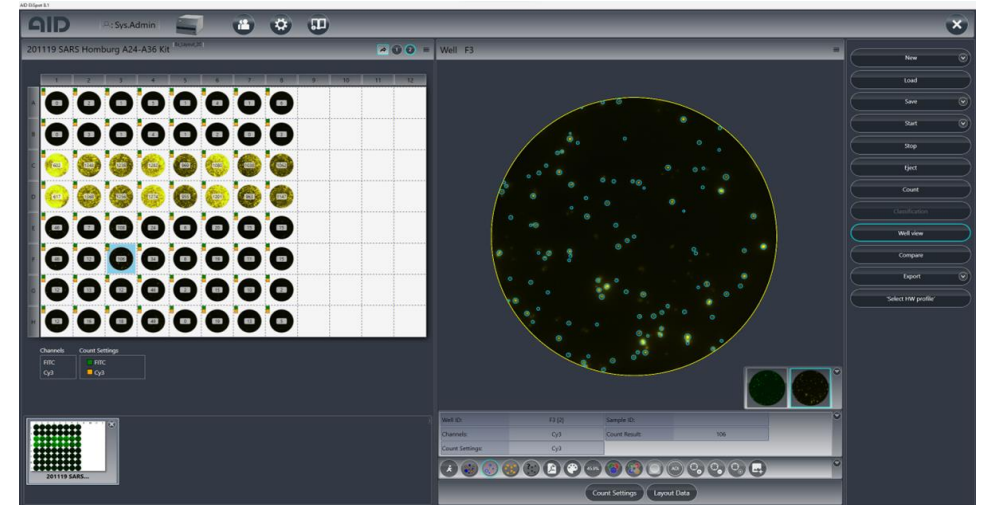
However, despite the inherent drawbacks of enzymatic two colour EliSpot Assays the AID EliSpot Reader Software v8.1 is capable of distinguishing between spots of different colours.



Green channel

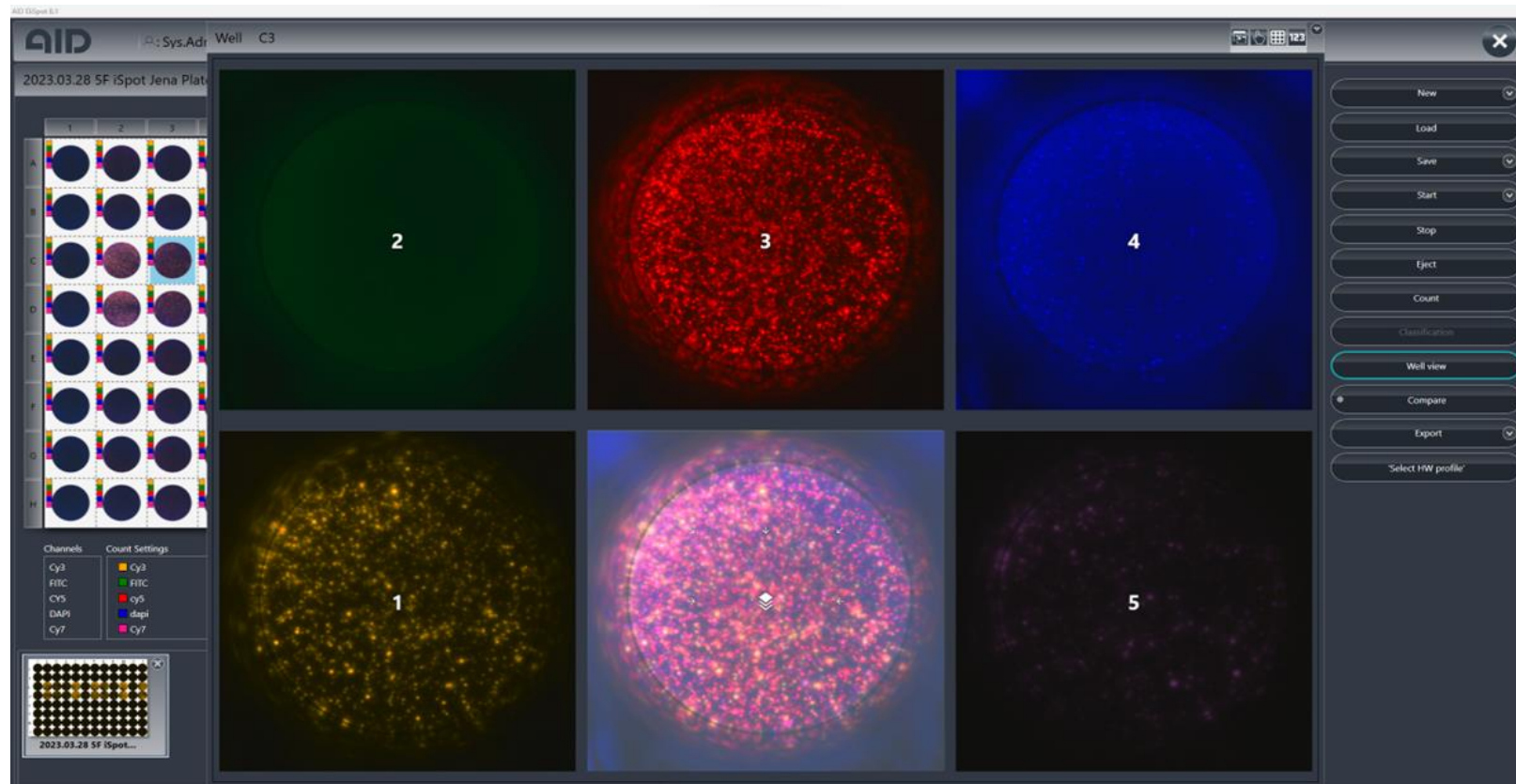


Red channel



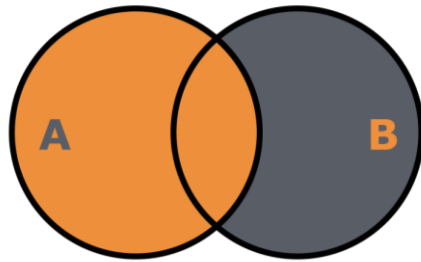
Overlay of green and red channel

View and compare different channels at once

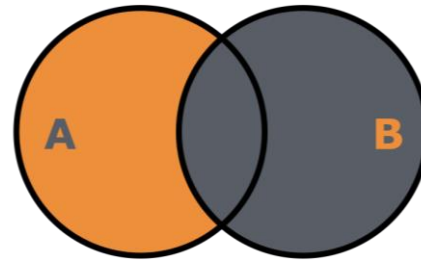


Combine different channels and count your spots

INCLUSIVE
Double stained spots



EXCLUSIVE
Single cytokine

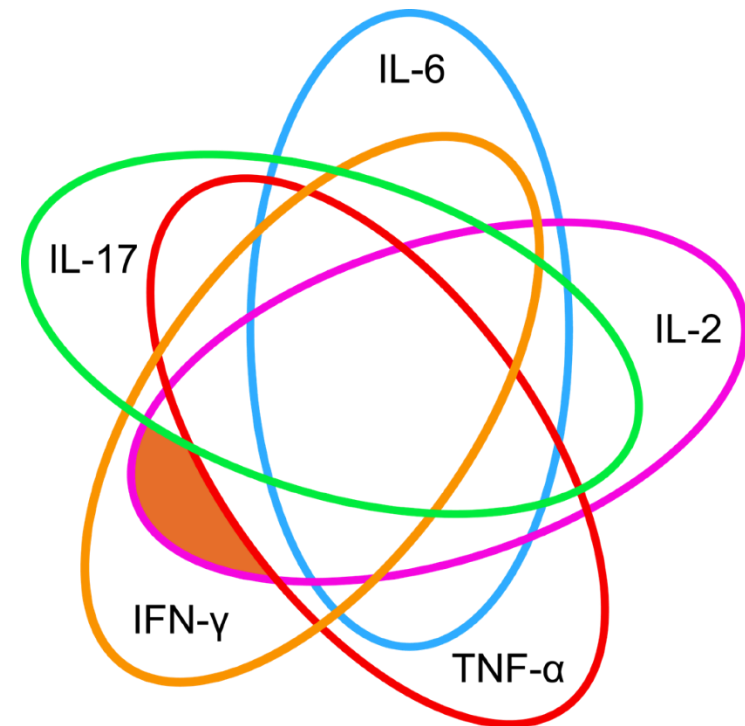
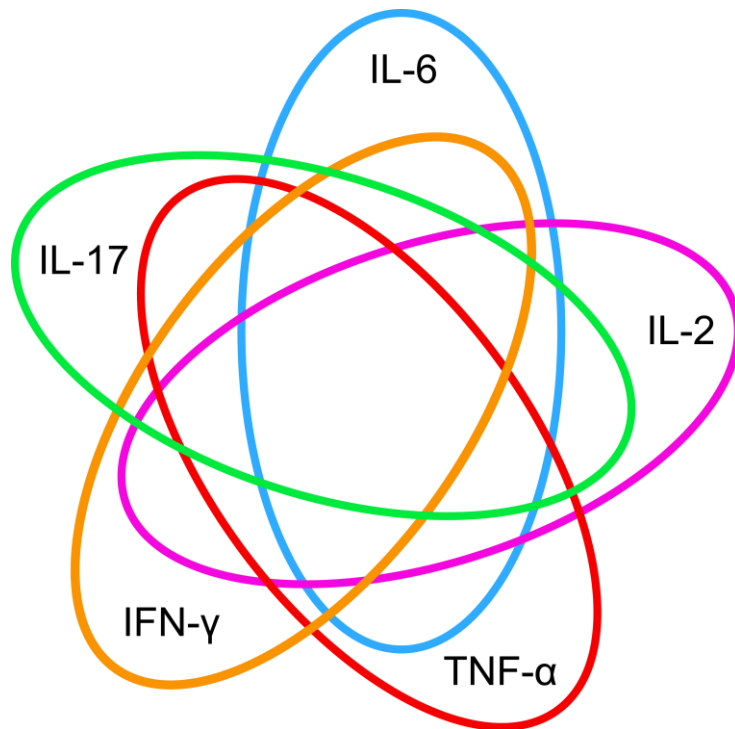


Number of possible combinations

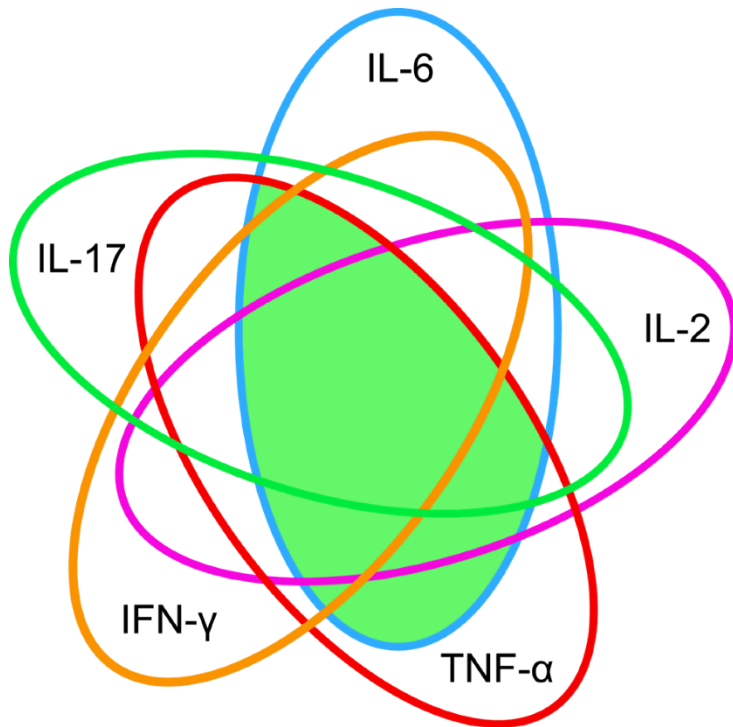
Combination	1	2	3	4	5	6	7	8	9	10	11	12	13	14	15	16	17	18	19	20	21	22	23	24	25	26	27	28	29	30	31	
DAPI	Orange					Orange	Orange	Orange	Orange							Orange	Orange	Orange	Orange	Orange							Orange	Orange	Orange	Orange	Orange	
FITC		Orange				Orange				Orange	Orange	Orange				Orange	Orange	Orange				Orange	Orange	Orange		Orange			Orange	Orange	Orange	
Cy3			Orange				Orange			Orange			Orange	Orange		Orange			Orange	Orange			Orange	Orange	Orange	Orange	Orange		Orange	Orange	Orange	
Cy5				Orange				Orange			Orange		Orange		Orange		Orange			Orange	Orange			Orange	Orange	Orange	Orange	Orange	Orange		Orange	Orange
Cy7					Orange				Orange			Orange		Orange	Orange			Orange			Orange	Orange	Orange	Orange		Orange	Orange	Orange	Orange	Orange		Orange

Logical operators can be used to define your cell population of interest.

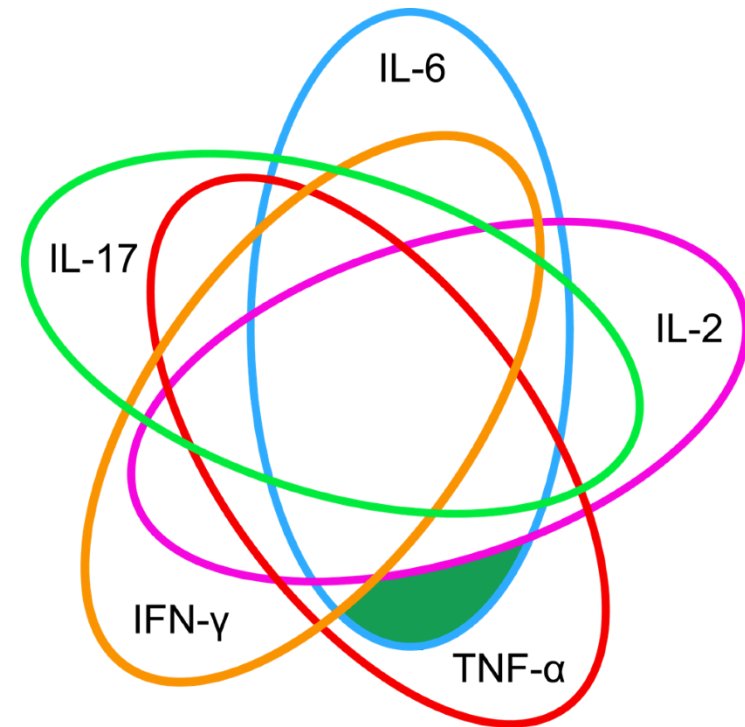
IFN- γ + IL-2 positive cells only

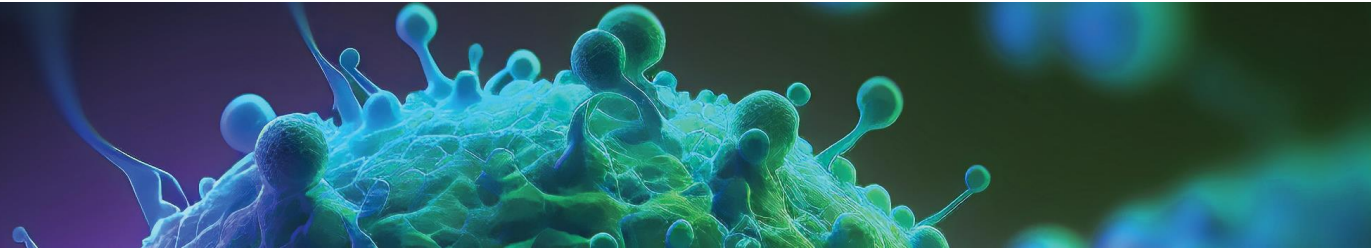


IL-6 + TNF- α positive cells including all spots with additional cytokines



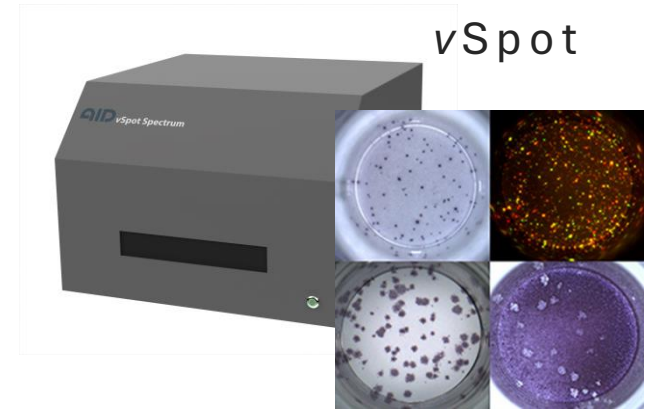
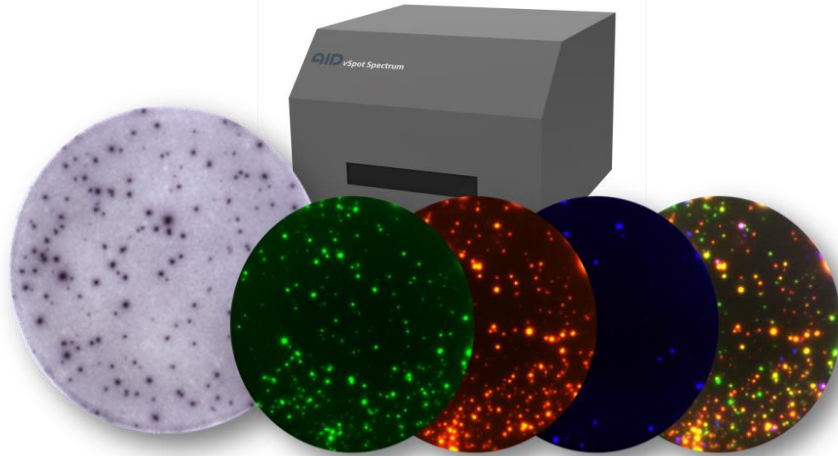
IL-6 + TNF- α positive cells excluding all additional cytokines



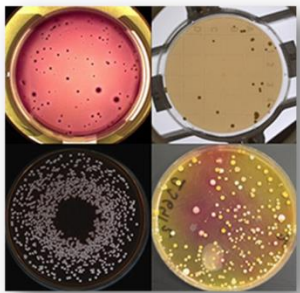


EliSpot Robot

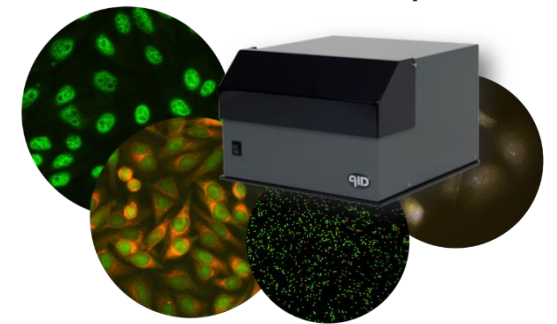
EliSpot / iSpot



vSpot



Colony Counter



multiSpot